



3A.114-E
 Issue 6.1 - 2016

GHE Ball Float Steam Trap

Description

The GHE series float steam traps are manufactured with carbon steel body and stainless steel cover; internal components are made from stainless steel. They are suitable for use with saturated and superheated steam on process equipments and on medium / high consumption applications.

Working is fully automatic also regarding air venting (bimetallic thermo element) while the condensate discharge has modulating characteristics. These traps are ideal for all process drainage applications as condensate is always removed efficiently and quickly over a wide range of fluctuating pressures and load conditions; they meet all the needs and demands of process automatic control systems.

To facilitate the installation on the plant, the mounting connections can be easily positioned in four different way.

Stainless steel body and cover are available on request and must be stated at the time of order placement.

Standards

This product fully complies with the requirements of the European Pressure Equipment Directive 2014/68/EU and carries the CE mark when so required.

Certification

This product is available with material certification to EN 10204 2.2 or EN 10204 3.1.

Note: all certification/inspection requirements must be stated at the time of order placement.



Sizes and pipe connections

DN 40 and DN 50 flanged EN 1092 PN 40, standard
 DN 40 and DN 50 flanged ANSI B16.5 Class 150 and 300, on request

1½" and 2" screwed NPT, on request

1½" and 2" socket weld ends to ANSI B16.11, on request

Pressure/temperature limits

PMA - Maximum allowable pressure	50 bar g	@ 350°C
TMA - Maximum allowable temperature	425°C	@ 32 bar g
Minimum allowable temperature		-10°C
PMO - Maximum operating pressure	32 bar g	@ 350°C
TMO - Maximum operating temperature		350°C
Minimum operating temperature, danger of freezing considered		0°C
	GHE 10	10 bar g
ΔPMX - Maximum differential pressure	GHE 21	21 bar g
	GHE 32	32 bar g
Designed for a maximum cold hydraulic test pressure of		75 bar g

Note: maximum operating pressure can be limited by the rating chosen for the flanges.

Materials

N° Part	Material	
1 Body	Carbon steel	ASTM A216 WCB
	Stainless steel	ASTM A351 CF8 (on request)
2 Cover	Stainless steel	ASTM A351 CF8
3 Cover gasket	Asbestos-free synthetic fibre	
4 Air vent assembly	Stainless steel	
5 Bracket gasket	Asbestos-free synthetic fibre	
6 Bracket assembly	Stainless steel	AISI 304
7 Bracket screws	Stainless steel	AISI 304
8 Lower valve seat	Stainless steel	Series 400C
9 Valve plug	Stainless steel	Series 400C
10 Float arm	Stainless steel	AISI 304
11 Ball float	Stainless steel	AISI 304
12 Drain plug	Carbon steel	ASTM A105
13 Cover studs	Carbon steel	ASTM A193 B7
	Carbon steel	ASTM A194 8M

Capacities (kg/h)

The condensate discharge capacities shown below are based on condensate at saturation temperature.

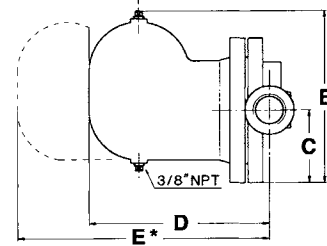
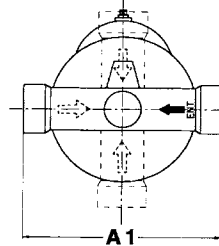
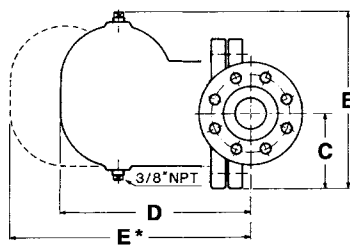
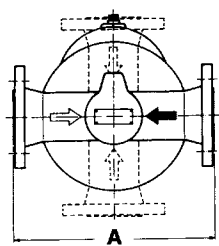
Differential pressure (bar g)	Trap type					
	GHE 10 DN 40 - 1½"	GHE 10 DN 50 - 2"	GHE 21 DN 40 - 1½"	GHE 21 DN 50 - 2"	GHE 32 DN 40 - 1½"	GHE 32 DN 50 - 2"
0.1	1500	3600	1000	1900	580	900
0.3	2500	6000	1700	3300	950	1500
0.5	3200	7700	2150	4100	1200	1900
0.7	3700	8900	2450	4800	1400	2200
1	4300	10600	2900	5700	1700	2650
1.5	5200	12500	3500	6800	2000	3200
2	6000	14100	4000	7800	2250	3600
4	8200	20000	5500	10500	3100	5000
7	11000	26000	7300	13500	3800	6500
10	13000	30500	8500	16300	4800	7600
13	--	--	9500	18000	5500	8500
15	--	--	10500	19500	5900	9100
18	--	--	12000	21500	6500	10300
21	--	--	12300	22500	6800	11000
24	--	--	--	--	7200	12000
28	--	--	--	--	7800	12600
32	--	--	--	--	8200	13000

The choice of trap should be based on the following data:

- Hourly amount of condensate to be discharged,
- Effective differential pressure,
- Safety factor: 1.25 to 1.5 for continuous use; 2 to 3 for intermittent use.

Dimensions/weights (approximate) in mm and kg

DN	A	A1	B	C	D	E*	Weight	
							Scrd./SW	Flgd.
1½" - 40	320	324	280	120	300	480	30.0	35.0
2" - 50	320	324	280	120	300	480	30.0	37.0



Connections:

- Black arrow: standard supply configuration (right to left)
- White arrows: optional installation configurations, on request

* Withdrawal distance

How to order

Example: N° 1 off ball float steam trap Spirax Sarco GHE 21, with carbon steel body and stainless steel internal components. Maximum operating and differential pressure 21 bar. Flanged connections according to EN 1092 PN 40 DN 50.

How to order spares

Always order spare parts by using the description given in the table and state the size and type of trap, including pressure range and type of the connections.

Example: N° 1 main valve assembly for a ball float steam trap Spirax Sarco GHE 32, DN 1½".

Safety information, installation and maintenance

For full details see the Installation and Maintenance Instructions 3.341.5275.240 supplied with the product.

Installation note

The traps must be installed below the draining point and, with low operating pressures or when in presence of automatic temperature control, assure an hydrostatic head of about 1 metre between the drainage outlet and the trap. Make the connections so that the trap is positioned with the arrow on the body pointed vertically downwards. The use of an upstream protection strainers is always recommended to prevent possible damage to the internal components and to assure regular working operation. To permit a safe inspection for cleaning or maintenance purpose install suitable shut-off valves. If the trap is to discharge to atmosphere ensure it is to a safe place, the discharging fluid may be at a temperature of 100°C.

Disposal

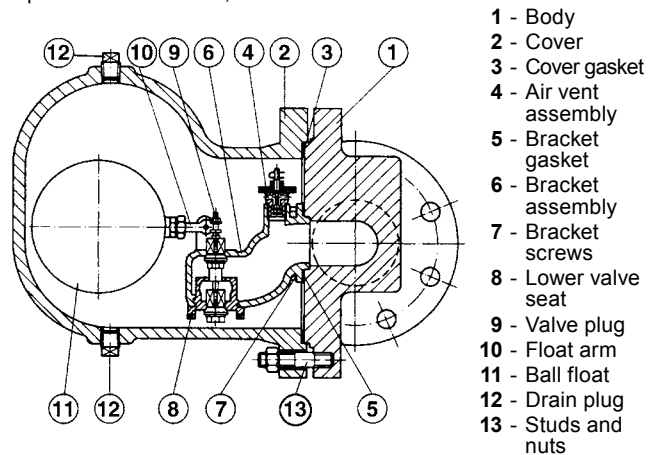
The product is recyclable. No ecological hazard is anticipated with the disposal of this product providing due care is taken.

Spare parts

The spare parts are shown in the drawing by the side and are available in groupings as indicated in the table. Other parts are not available as spares.

Available spares

Main valve assembly	3, 5, 6, 7, 8, 9, 10
Ball float and cover gasket assembly	3, 11
Air vent assembly (2 off)	4
Gasket set (3+3 off)	3, 5



Recommended tightening torques

Item	Size	or		N m
Cover nuts	1½" - 40	24 A/F	M 16 x 70	90
	2" - 50	24 A/F	M 16 x 70	90
Bracket screws	1½" - 40		M 8 x 15	18.2
	2" - 50		M 8 x 15	18.2